

# REACH 01

권장 치수

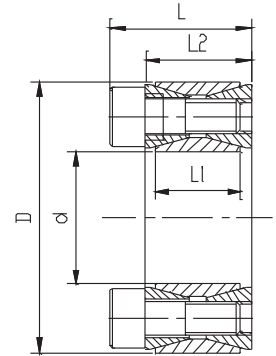
Recommended Dimensions:

축 : h8 Shaft: h8

허브 : H8 Hub: H8

JB/T 7934 Z2 표준과 유사

Similar to JB/T 7934 Z2 Standard



치수 Dimensions					전달된 축 방향의 힘 Transmitted Axial Force	전달된 토크 Transmitted Torque	접촉 압력 Contacting Pressure		DIN912-12.9 잠금 나사 DIN912-12.9 Locking Screw		
Φd	ΦD	L1	L2	L			축 Shaft	허브 Hub	수량 n	규격 Size	잠금 토크 Locking Torque
mm	mm	mm	mm	mm	Ft KN	Mt Nm	P N/mm <sup>2</sup>	P1 N/mm <sup>2</sup>			Ts Nm
19	47	17	20	26	31	298	286	116	8	M6x18	14.9
20	47	17	20	26	31	313	272	116	8	M6x18	14.9
22	47	17	20	26	31	345	247	116	8	M6x18	14.9
24	50	17	20	26	35	424	255	123	9	M6x18	14.9
25	50	17	20	26	35	441	245	123	9	M6x18	14.9
28	55	17	20	26	39	549	243	124	10	M6x18	14.9
30	55	17	20	26	39	588	227	124	10	M6x18	14.9
32	60	17	20	26	47	752	255	136	12	M6x18	14.9
35	60	17	20	26	47	822	233	136	12	M6x18	14.9
38	65	17	20	26	55	1042	250	146	14	M6x18	14.9
40	65	17	20	26	55	1097	238	146	14	M6x18	14.9
42	75	20	24	32	83	1740	291	163	12	M8x22	35
45	75	20	24	32	83	1864	271	163	12	M8x22	35
48	80	20	24	32	83	1988	254	153	12	M8x22	35
50	80	20	24	32	83	2071	244	153	12	M8x22	35
55	85	20	24	32	97	2658	259	168	14	M8x22	35
60	90	20	24	32	97	2900	238	158	14	M8x22	35
65	95	20	24	32	110	3587	250	171	16	M8x22	35
70	110	24	28	38	153	5345	268	171	14	M10x25	69
75	115	24	28	38	153	5727	250	163	14	M10x25	69
80	120	24	28	38	153	6108	235	156	14	M10x25	69
85	125	24	28	38	175	7417	252	172	16	M10x25	69
90	130	24	28	38	175	7854	238	165	16	M10x25	69
95	135	24	28	38	196	9326	254	179	18	M10x25	69
100	145	26	33	45	227	11362	258	178	14	M12x30	123.3
110	155	26	33	45	227	12498	234	166	14	M12x30	123.3
120	165	26	33	45	260	15578	245	178	16	M12x30	123.3
130	180	34	38	50	325	21095	217	156	20	M12x35	123.3
140	190	34	38	50	357	24993	221	163	22	M12x35	123.3
150	200	34	38	50	390	29217	225	169	24	M12x35	123.3
160	210	34	38	50	422	33756	229	174	26	M12x35	123.3
170	225	38	44	58	465	39483	212	160	22	M14x40	187
180	235	38	44	58	507	45606	218	167	24	M14x40	187
190	250	46	52	66	591	56163	199	152	28	M14x45	187
200	260	46	52	66	633	63342	203	156	30	M14x45	187
220	285	50	56	72	745	81960	200	154	26	M16X50	290
240	305	50	56	72	860	103162	211	166	30	M16X50	290



REACH01 JB/T 7934 Z2 표준과 유사

REACH 01 Similar to JB/T 7934 Z2 Standard

치수 Dimensions					전달된 축 방향의 힘 Transmitted Axial Force	전달된 토크 Transmitted Torque	접촉 압력 Contacting Pressure		DIN912-12.9 잠금 나사 DIN912-12.9 Locking Screw		
							축 Shaft	허브 Hub	수량 n	규격 Size	잠금 토크 Locking Torque
Φd	ΦD	L1	L2	L	Ft	Mt	P	P1			
mm	mm	mm	mm	mm	KN	Nm	N/mm <sup>2</sup>	N/mm <sup>2</sup>			Nm
260	325	50	56	72	974	126669	221	177	34	M16X50	290
280	355	60	66	84	1124	157339	197	156	32	M18X60	400
300	375	60	66	84	1264	189653	207	166	36	M18X60	400
320	405	72	78	98	1651	264108	211	167	36	M20X70	580
340	425	72	78	98	1651	280614	199	159	36	M20X70	580
360	455	84	90	112	2017	363061	197	156	36	M22X80	780
380	475	84	90	112	2017	383232	186	149	36	M22X80	780
400	495	84	90	112	2017	403402	177	143	36	M22X80	780
420	515	84	90	112	2241	470633	187	153	40	M22X80	780
440	545	96	102	126	2634	579506	184	148	40	M24X90	1000
460	565	96	102	126	2634	605848	176	143	40	M24X90	1000
480	585	96	102	126	2766	663811	177	145	42	M24X90	1000
500	605	96	102	126	2898	724383	178	147	44	M24X90	1000
520	630	96	102	126	2963	770487	175	144	45	M24X90	1000
540	650	96	102	126	2963	800121	169	140	45	M24X90	1000
560	670	96	102	126	3161	885064	173	145	48	M24X90	1000
580	690	96	102	126	3293	954884	174	147	50	M24X90	1000
600	710	96	102	126	3293	987811	169	142	50	M24X90	1000
620	730	96	102	126	3424	1061550	170	144	52	M24X90	1000
640	750	96	102	126	3556	1137957	171	146	54	M24X90	1000
660	770	96	102	126	3688	1216963	172	147	56	M24X90	1000
680	790	96	102	126	3688	1253841	167	143	56	M24X90	1000
700	810	96	102	126	3951	1382913	173	150	60	M24X90	1000
720	830	96	102	126	3951	1422425	169	146	60	M24X90	1000
740	850	96	102	126	4083	1510688	169	148	62	M24X90	1000
760	870	96	102	126	4215	1601545	170	149	64	M24X90	1000
780	890	96	102	126	4280	1669384	169	148	65	M24X90	1000
800	910	96	102	126	4346	1738541	167	147	66	M24X90	1000
820	930	96	102	126	4478	1835982	168	148	68	M24X90	1000
840	950	96	102	126	4610	1936101	169	149	70	M24X90	1000
860	970	96	102	126	4741	2038809	169	150	72	M24X90	1000
880	990	96	102	126	4873	2144197	170	151	74	M24X90	1000
900	1010	96	102	126	4939	2222575	169	150	75	M24X90	1000
920	1030	96	102	126	5005	2302221	167	149	76	M24X90	1000
940	1050	96	102	126	5137	2414196	168	150	78	M24X90	1000
960	1070	96	102	126	5268	2528755	169	151	80	M24X90	1000
980	1090	96	102	126	5334	2613719	167	150	81	M24X90	1000
1000	1110	96	102	126	5400	2700000	166	149	82	M24X90	1000